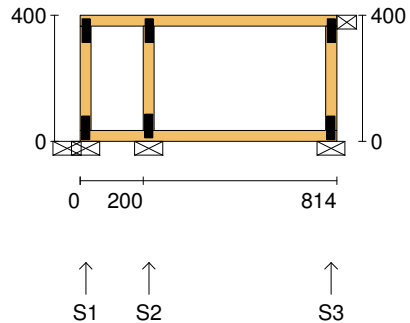


Client: D'ANDREA	Trusstech SA Pty Ltd 16 High St., Dry Creek, SA 5094 Joist Name: FJ1 Type: SJ 400 Ladder Joists: FJ1	Job No: TT02360
Site: 50-52 WINDSOR ST MAGILL SA 5072 AUS		Weight: 4.33 kg
Ref: DWLG 1		Total Weight: 4.33 kg Laminations: 1



TIMBER / PLATES


Member	Size	Plating	Restraint
BC1	90x35-MGP10 H0 ADS	JD5	600
LEW1	90x35-MGP10 H0 ADS	JD5	
TC1	90x35-MGP10 H0 ADS	JD5	300
W1	90x35-MGP10 H0 ADS	JD5	
REW1	90x35-MGP10 H0 ADS	JD5	

Vertical Reactions at Supports

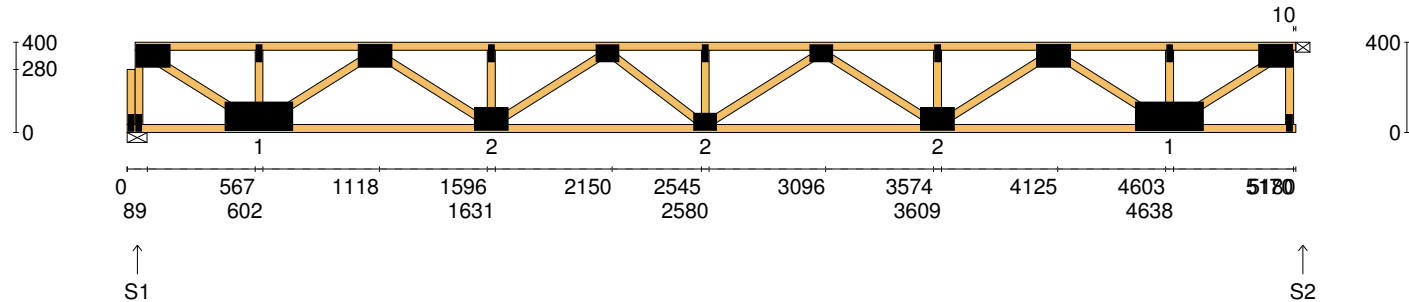
		S1	S2	S3
1.35DL	(kN)	-0.01	0.19	0.08
1.2DL + 1.5LL	(kN)	-0.09	0.98	0.38

Joint Nail Plate

TL1	25x75-MN
BL2	25x75-MN
T1	25x75-MN
B1	25x75-MN
TR1	25x75-MN
BR2	25x75-MN

Span: 814	Floor Material: Particle (15.4 kg/m²)	Application: General Areas	All dimensions in millimetres. This drawing should be read in conjunction with Multinail Technical sheets. Wall plates must be placed at supports only.	016020 (TN-016-020)
Overhang: 0/0	Floor Covering: Std Carpet + Underlay (8 kg/m²)	Live Load: 1.5 kPa		Ver: Floor 1.9.4
Spacing: 600	Ceiling Material: Plaster 10mm Supa Span (8.2 kg/m²)	Point Load: 1.8 kN		Date: 7/12/2018
Quantity: 1	Ceiling Fixing: Metal direct @ 600c	Design: AS 1720.1-2010		Page: 1 of 30

Client: D'ANDREA	Trusstech SA Pty Ltd 16 High St., Dry Creek, SA 5094 Joist Name: FJ2 Type: SJ 400 Joists: FJ2, FJ3, FJ4, FJ5, FJ6, FJ7	Job No: TT02360
Site: 50-52 WINDSOR ST MAGILL SA 5072 AUS		Weight: 32.65 kg
Ref: DWLG 1		Total Weight: 195.90 kg
		Laminations: 1



TIMBER / PLATES


Member	Size	Plating	Restraint
BC1	90x35-MGP10 H0 ADS	JD5	600
LBlock1	90x35-MGP10 H0 ADS	JD5	
LEW1	90x35-MGP10 H0 ADS	JD5	
TC1	90x35-MGP10 H0 ADS	JD5	300
W1	90x35-MGP10 H0 ADS	JD5	
W2	90x35-MGP10 H0 ADS	JD5	
W3	90x35-MGP10 H0 ADS	JD5	
W4	90x35-MGP10 H0 ADS	JD5	
W5	90x35-MGP10 H0 ADS	JD5	
W6	90x35-MGP10 H0 ADS	JD5	
W7	90x35-MGP10 H0 ADS	JD5	
W8	90x35-MGP10 H0 ADS	JD5	
W9	90x35-MGP10 H0 ADS	JD5	

- 7 more members were not shown -

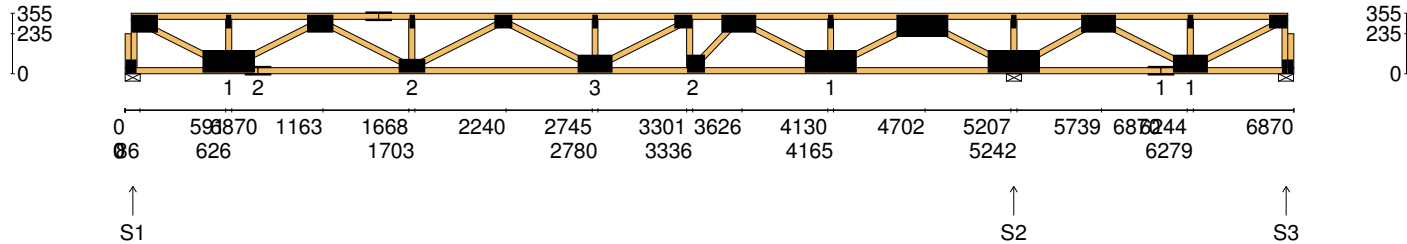
Vertical Reactions at Supports

	S1	S2
1.35DL (kN)	0.85	0.84
1.2DL + 1.5LL (kN)	4.20	4.19

Joint	Nail Plate	Joint	Nail Plate
BL1-1	25x75-MN	T8	25x75-MN
T1	100x150-MN	T9	100x150-MN
BL1	25x75-MN	B5	125x300-MN
B1	125x300-MN	T10	25x75-MN
T2	25x75-MN	BR1	25x75-MN
T3	100x150-MN	T11	100x150-MN
B2	100x150-MN		
T4	25x75-MN		
T5	75x100-MN		
B3	75x100-MN		
T6	25x75-MN		
T7	75x100-MN		
B4	100x150-MN		

Span: 5180	Floor Material: Particle (15.4 kg/m²)	Application: General Areas	All dimensions in millimetres. This drawing should be read in conjunction with Multinail Technical sheets. Wall plates must be placed at supports only.	016020 (TN-016-020)
Overhang: 0/0	Floor Covering: Std Carpet + Underlay (8 kg/m²)	Live Load: 1.5 kPa		Ver: Floor 1.9.4
Spacing: 600	Ceiling Material: Plaster 10mm Supa Span (8.2 kg/m²)	Point Load: 1.8 kN		Date: 7/12/2018
Quantity: 6	Ceiling Fixing: Metal direct @ 600c	Design: AS 1720.1-2010		Page: 2 of 30

Client: D'ANDREA	Trusstech SA Pty Ltd 16 High St., Dry Creek, SA 5094	Job No: TT02360
Site: 50-52 WINDSOR ST MAGILL SA 5072 AUS		Weight: 43.64 kg
Ref: DWL G 1	Joist Name: FJ3 Type: SJ 355 Joists: FJ8, FJ9, FJ10	Total Weight: 130.93 kg
		Laminations: 1



TIMBER / PLATES

Member	Size	Plating	Restraint
BC1	90x35-MGP10 H0 ADS	JD5	600
LBlock1	90x35-MGP10 H0 ADS	JD5	
LEW1	90x35-MGP10 H0 ADS	JD5	
TC1	90x35-MGP10 H0 ADS	JD5	300
W1	90x35-MGP10 H0 ADS	JD5	
W2	90x35-MGP10 H0 ADS	JD5	
W3	90x35-MGP10 H0 ADS	JD5	
BC2	90x35-MGP10 H0 ADS	JD5	600
W4	90x35-MGP10 H0 ADS	JD5	
TC2	90x35-MGP10 H0 ADS	JD5	300
W5	90x35-MGP10 H0 ADS	JD5	
W6	90x35-MGP10 H0 ADS	JD5	
W7	90x35-MGP10 H0 ADS	JD5	


- 16 more members were not shown -

Vertical Reactions at Supports

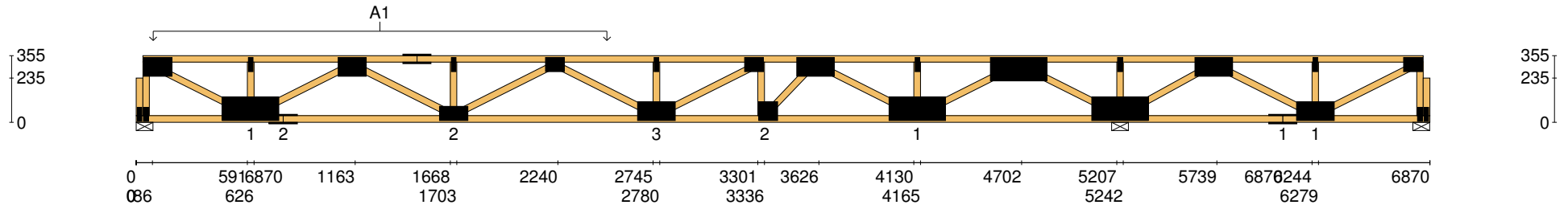
	S1	S2	S3
1.35DL (kN)	1.34	2.26	-0.45
1.2DL + 1.5LL (kN)	4.60	9.68	-1.55


Joint	Nail Plate	Joint	Nail Plate
BL1-1	25x75-MN	T8	75x100-MN
T1	100x150-MN	B5	100x100-MN
BL1	25x75-MN	T9	100x200-MN
B1	125x300-MN	B6	125x300-MN
T2	25x75-MN	T10	25x75-MN
B2	75x150-MN	T11	125x300-MN
T3	100x150-MN	B7	125x300-MN
T4	75x150-MN	T12	25x75-MN
B3	75x150-MN	T13	100x200-MN
T5	25x75-MN	B8	75x150-MN
T6	75x100-MN	B9	100x200-MN
B4	100x200-MN	T14	25x75-MN
T7	25x75-MN	BR1-1	25x75-MN

- 2 more nail plates were not shown -

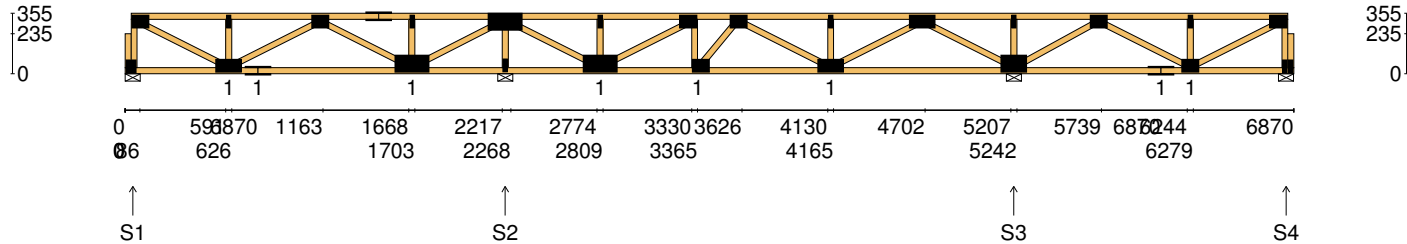
Span: 6870	Floor Material: Particle (15.4 kg/m²)	Application: General Areas	All dimensions in millimetres. This drawing should be read in conjunction with Multinail Technical sheets. Wall plates must be placed at supports only.	016020 (TN-016-020)
Overhang: 0/0	Floor Covering: Std Carpet + Underlay (8 kg/m²)	Live Load: 1.5 kPa		Ver: Floor 1.9.4
Spacing: 600	Ceiling Material: Plaster 10mm Supa Span (8.2 kg/m²)	Point Load: 1.8 kN		Date: 7/12/2018
Quantity: 3	Ceiling Fixing: Metal direct @ 600c	Design: AS 1720.1-2010		Page: 3 of 30

Client: D'ANDREA	Trusstech SA Pty Ltd 16 High St., Dry Creek, SA 5094 Joist Name: FJ3 Type: SJ 355 Joists: FJ8, FJ9, FJ10	Job No: TT02360
Site: 50-52 WINDSOR ST MAGILL SA 5072 AUS		Weight: 43.64 kg
Ref: DWLG 1		Total Weight: 130.93 kg
		Laminations: 1



<div>User Def. Load<div>A1190.52 kg/m²WET AREA</div></div>				
<div>Applied Load<div>DL(kN)LL(kN)WL Up(kN)WL Dn(kN)</div></div>				
Span:	6870	Floor Material:	Particle (15.4 kg/m²)	<div>Application:General Areas</div> <div>All dimensions in millimetres. This drawing should be read in conjunction with Multinail Technical sheets. Wall plates must be placed at supports only.</div> <div></div>
Overhang:	0/0	Floor Covering:	Std Carpet + Underlay (8 kg/m²)	
Spacing:	600	Ceiling Material:	Plaster 10mm Supa Span (8.2 kg/m²)	
Quantity:	3	Ceiling Fixing:	Metal direct @ 600c	
			Design:	AS 1720.1-2010
<div>016020(TN-016-020)</div> <div>Ver: Floor 1.9.4</div> <div>Date: 7/12/2018</div> <div>Page: 4 of 30</div>				

Client: D'ANDREA	Trusstech SA Pty Ltd 16 High St., Dry Creek, SA 5094	Job No: TT02360
Site: 50-52 WINDSOR ST MAGILL SA 5072 AUS		Weight: 41.77 kg
Ref: DWLG 1	Joist Name: FJ4 Type: SJ 355 Joists: FJ11	Total Weight: 41.77 kg
		Laminations: 1



TIMBER / PLATES

Member	Size	Plating	Restraint
BC1	90x35-MGP10 H0 ADS	JD5	600
LBlock1	90x35-MGP10 H0 ADS	JD5	
LEW1	90x35-MGP10 H0 ADS	JD5	
TC1	90x35-MGP10 H0 ADS	JD5	300
W1	90x35-MGP10 H0 ADS	JD5	
W2	90x35-MGP10 H0 ADS	JD5	
W3	90x35-MGP10 H0 ADS	JD5	
BC2	90x35-MGP10 H0 ADS	JD5	600
W4	90x35-MGP10 H0 ADS	JD5	
TC2	90x35-MGP10 H0 ADS	JD5	300
W5	90x35-MGP10 H0 ADS	JD5	
W6	90x35-MGP10 H0 ADS	JD5	
W7	90x35-MGP10 H0 ADS	JD5	


- 17 more members were not shown -

Vertical Reactions at Supports

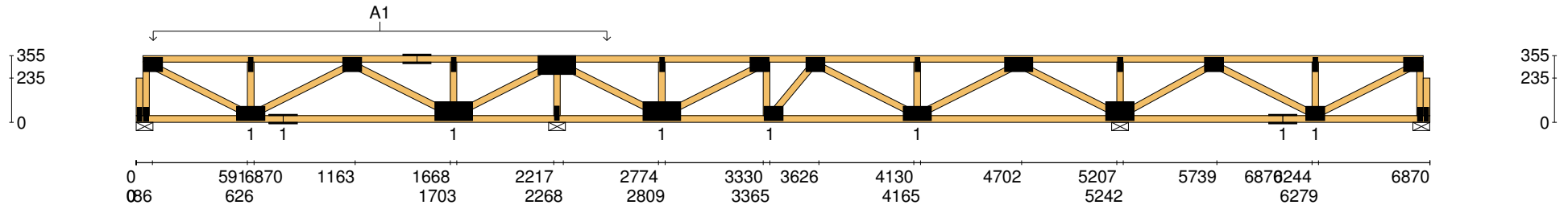
	S1	S2	S3	S4
1.35DL (kN)	0.63	1.55	0.82	0.16
1.2DL + 1.5LL (kN)	1.93	5.83	4.25	0.73


Joint	Nail Plate	Joint	Nail Plate
BL1-1	25x75-MN	T7	25x75-MN
T1	75x100-MN	T8	75x100-MN
BL1	25x75-MN	B6	75x100-MN
B1	75x150-MN	T9	75x100-MN
T2	25x75-MN	B7	75x150-MN
B2	75x150-MN	T10	25x75-MN
T3	75x100-MN	T11	75x150-MN
T4	75x150-MN	B8	100x150-MN
B3	100x200-MN	T12	25x75-MN
T5	25x75-MN	T13	75x100-MN
T6	100x200-MN	B9	75x150-MN
B4	25x75-MN	B10	75x100-MN
B5	100x200-MN	BR1-1	25x75-MN

- 3 more nail plates were not shown -

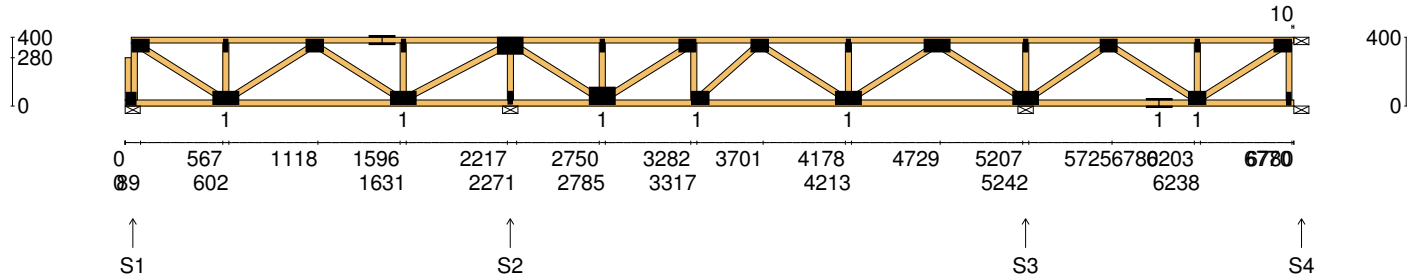
Span: 6870	Floor Material: Particle (15.4 kg/m²)	Application: General Areas	All dimensions in millimetres. This drawing should be read in conjunction with Multinail Technical sheets. Wall plates must be placed at supports only.	016020 (TN-016-020)
Overhang: 0/0	Floor Covering: Std Carpet + Underlay (8 kg/m²)	Live Load: 1.5 kPa		Ver: Floor 1.9.4
Spacing: 600	Ceiling Material: Plaster 10mm Supa Span (8.2 kg/m²)	Point Load: 1.8 kN		Date: 7/12/2018
Quantity: 1	Ceiling Fixing: Metal direct @ 600c	Design: AS 1720.1-2010		Page: 5 of 30

Client: D'ANDREA	Trusstech SA Pty Ltd 16 High St., Dry Creek, SA 5094	Job No: TT02360
Site: 50-52 WINDSOR ST MAGILL SA 5072 AUS		Weight: 41.77 kg
Ref: DWLG 1	Joist Name: FJ4 Type: SJ 355 Joists: FJ11	Total Weight: 41.77 kg
		Laminations: 1



User Def. Load		A1 190.52 kg/m ² WET AREA	
Applied Load			
DL	(kN)		
LL	(kN)		
WL Up	(kN)		
WL Dn	(kN)		
Span:	6870	Floor Material:	Particle (15.4 kg/m²)
Overhang:	0/0	Floor Covering:	Std Carpet + Underlay (8 kg/m²)
Spacing:	600	Ceiling Material:	Plaster 10mm Supa Span (8.2 kg/m²)
Quantity:	1	Ceiling Fixing:	Metal direct @ 600c
		Application:	General Areas
		Live Load:	1.5 kPa
		Point Load:	1.8 kN
		Design:	AS 1720.1-2010
		All dimensions in millimetres. This drawing should be read in conjunction with Multinail Technical sheets. Wall plates must be placed at supports only.	
			
		016020 (TN-016-020)	
		Ver: Floor 1.9.4	
		Date: 7/12/2018	
		Page: 6 of 30	

Client: D'ANDREA	Trusstech SA Pty Ltd 16 High St., Dry Creek, SA 5094	Job No: TT02360
Site: 50-52 WINDSOR ST MAGILL SA 5072 AUS		Weight: 41.74 kg
Ref: DWLG 1	Joist Name: FJ5 Type: SJ 400 Joists: FJ12	Total Weight: 41.74 kg
		Laminations: 1



TIMBER / PLATES

Member	Size	Plating	Restraint
BC1	90x35-MGP10 H0 ADS	JD5	600
LBlock1	90x35-MGP10 H0 ADS	JD5	
LEW1	90x35-MGP10 H0 ADS	JD5	
TC1	90x35-MGP10 H0 ADS	JD5	300
W1	90x35-MGP10 H0 ADS	JD5	
W2	90x35-MGP10 H0 ADS	JD5	
W3	90x35-MGP10 H0 ADS	JD5	
W4	90x35-MGP10 H0 ADS	JD5	
TC2	90x35-MGP10 H0 ADS	JD5	300
W5	90x35-MGP10 H0 ADS	JD5	
W6	90x35-MGP10 H0 ADS	JD5	
W7	90x35-MGP10 H0 ADS	JD5	
W8	90x35-MGP10 H0 ADS	JD5	


- 15 more members were not shown -

Vertical Reactions at Supports

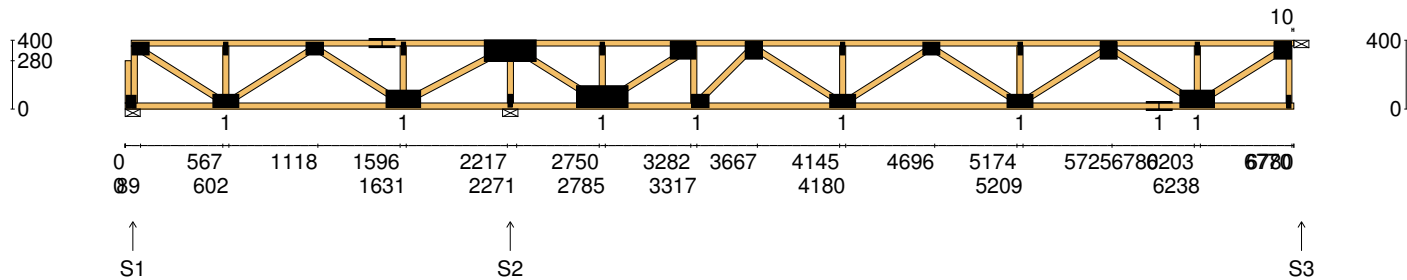
	S1	S2	S3	S4
1.35DL (kN)	0.27	0.96	0.86	0.13
1.2DL + 1.5LL (kN)	1.32	4.76	4.31	0.63

Joint	Nail Plate	Joint	Nail Plate
BL1-1	25x75-MN	T8	75x100-MN
T1	75x100-MN	B5	75x100-MN
BL1	25x75-MN	T9	75x100-MN
B1	75x150-MN	B6	75x150-MN
T2	25x75-MN	T10	25x75-MN
T3	75x100-MN	T11	75x150-MN
T4	75x150-MN	B7	75x150-MN
B2	75x150-MN	T12	25x75-MN
T5	25x75-MN	T13	75x100-MN
T6	100x150-MN	B8	75x150-MN
B3	25x75-MN	B9	75x100-MN
B4	100x150-MN	T14	25x75-MN
T7	25x75-MN	T15	75x100-MN

- 1 more nail plate was not shown -

Span: 6780	Floor Material: Particle (15.4 kg/m²)	Application: General Areas	All dimensions in millimetres. This drawing should be read in conjunction with Multinail Technical sheets. Wall plates must be placed at supports only.	016020 (TN-016-020)
Overhang: 0/0	Floor Covering: Std Carpet + Underlay (8 kg/m²)	Live Load: 1.5 kPa		Ver: Floor 1.9.4
Spacing: 600	Ceiling Material: Plaster 10mm Supa Span (8.2 kg/m²)	Point Load: 1.8 kN		Date: 7/12/2018
Quantity: 1	Ceiling Fixing: Metal direct @ 600c	Design: AS 1720.1-2010		Page: 7 of 30

Client: D'ANDREA	Trusstech SA Pty Ltd 16 High St., Dry Creek, SA 5094	Job No: TT02360
Site: 50-52 WINDSOR ST MAGILL SA 5072 AUS		Weight: 43.05 kg
Ref: DWLG 1	Joist Name: FJ6 Type: SJ 400 Joists: FJ13	Total Weight: 43.05 kg
		Laminations: 1



TIMBER / PLATES

Member	Size	Plating	Restraint
BC1	90x35-MGP10 H0 ADS	JD5	600
LBlock1	90x35-MGP10 H0 ADS	JD5	
LEW1	90x35-MGP10 H0 ADS	JD5	
TC1	90x35-MGP10 H0 ADS	JD5	300
W1	90x35-MGP10 H0 ADS	JD5	
W2	90x35-MGP10 H0 ADS	JD5	
W3	90x35-MGP10 H0 ADS	JD5	
W4	90x35-MGP10 H0 ADS	JD5	
TC2	90x35-MGP10 H0 ADS	JD5	300
W5	90x35-MGP10 H0 ADS	JD5	
W6	90x35-MGP10 H0 ADS	JD5	
W7	90x35-MGP10 H0 ADS	JD5	
W8	90x35-MGP10 H0 ADS	JD5	


- 15 more members were not shown -

Vertical Reactions at Supports

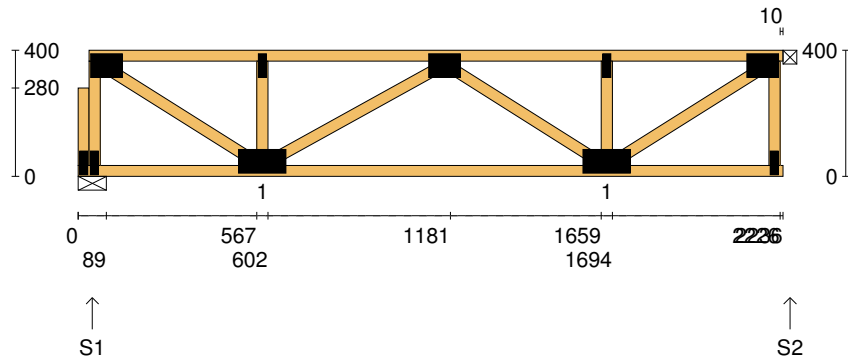
	S1	S2	S3
1.35DL (kN)	0.11	1.49	0.62
1.2DL + 1.5LL (kN)	0.50	7.43	3.09

Joint	Nail Plate	Joint	Nail Plate
BL1-1	25x75-MN	T8	100x150-MN
T1	75x100-MN	B5	75x100-MN
BL1	25x75-MN	T9	100x100-MN
B1	75x150-MN	B6	75x150-MN
T2	25x75-MN	T10	25x75-MN
T3	75x100-MN	T11	75x100-MN
T4	75x150-MN	B7	75x150-MN
B2	100x200-MN	T12	25x75-MN
T5	25x75-MN	T13	100x100-MN
T6	125x300-MN	B8	75x150-MN
B3	25x75-MN	B9	100x200-MN
B4	125x300-MN	T14	25x75-MN
T7	25x75-MN	T15	100x100-MN

- 1 more nail plate was not shown -

Span: 6780	Floor Material: Particle (15.4 kg/m²)	Application: General Areas	All dimensions in millimetres. This drawing should be read in conjunction with Multinail Technical sheets. Wall plates must be placed at supports only.	016020 (TN-016-020)
Overhang: 0/0	Floor Covering: Std Carpet + Underlay (8 kg/m²)	Live Load: 1.5 kPa		Ver: Floor 1.9.4
Spacing: 600	Ceiling Material: Plaster 10mm Supa Span (8.2 kg/m²)	Point Load: 1.8 kN		Date: 7/12/2018
Quantity: 1	Ceiling Fixing: Metal direct @ 600c	Design: AS 1720.1-2010		Page: 8 of 30

Client: D'ANDREA	Trusstech SA Pty Ltd 16 High St., Dry Creek, SA 5094 Joist Name: FJ7 Type: SJ 400 Joists: FJ14, FJ15	Job No: TT02360
Site: 50-52 WINDSOR ST MAGILL SA 5072 AUS		Weight: 14.09 kg
Ref: DWLG 1		Total Weight: 28.18 kg
		Laminations: 1



TIMBER / PLATES


Member	Size	Plating	Restraint
BC1	90x35-MGP10 H0 ADS	JD5	600
LBlock1	90x35-MGP10 H0 ADS	JD5	
LEW1	90x35-MGP10 H0 ADS	JD5	
TC1	90x35-MGP10 H0 ADS	JD5	300
W1	90x35-MGP10 H0 ADS	JD5	
W2	90x35-MGP10 H0 ADS	JD5	
W3	90x35-MGP10 H0 ADS	JD5	
W4	90x35-MGP10 H0 ADS	JD5	
W5	90x35-MGP10 H0 ADS	JD5	
W6	90x35-MGP10 H0 ADS	JD5	
REW1	90x35-MGP10 H0 ADS	JD5	

Vertical Reactions at Supports

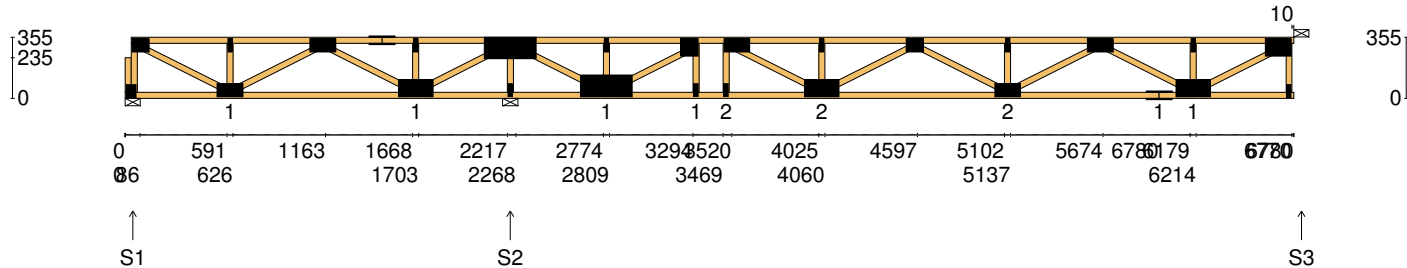
	S1	S2
1.35DL (kN)	0.36	0.36
1.2DL + 1.5LL (kN)	1.78	1.78

Joint Nail Plate

BL1-1	25x75-MN
T1	75x100-MN
BL1	25x75-MN
B1	75x150-MN
T2	25x75-MN
T3	75x100-MN
B2	75x150-MN
T4	25x75-MN
BR1	25x75-MN
T5	75x100-MN

Span: 2236	Floor Material: Particle (15.4 kg/m²)	Application: General Areas	All dimensions in millimetres. This drawing should be read in conjunction with Multinail Technical sheets. Wall plates must be placed at supports only.	016020 (TN-016-020)
Overhang: 0/0	Floor Covering: Std Carpet + Underlay (8 kg/m²)	Live Load: 1.5 kPa		Ver: Floor 1.9.4
Spacing: 600	Ceiling Material: Plaster 10mm Supa Span (8.2 kg/m²)	Point Load: 1.8 kN		Date: 7/12/2018
Quantity: 2	Ceiling Fixing: Metal direct @ 600c	Design: AS 1720.1-2010		Page: 9 of 30

Client: D'ANDREA	Trusstech SA Pty Ltd 16 High St., Dry Creek, SA 5094	Job No: TT02360
Site: 50-52 WINDSOR ST MAGILL SA 5072 AUS		Weight: 42.09 kg
Ref: DWLG 1	Joist Name: FJ8 Type: SJ 355 Joists: FJ16	Total Weight: 42.09 kg
		Laminations: 1



TIMBER / PLATES

Member	Size	Plating	Restraint
BC1	90x35-MGP10 H0 ADS	JD5	600
LBlock1	90x35-MGP10 H0 ADS	JD5	
LEW1	90x35-MGP10 H0 ADS	JD5	
TC1	90x35-MGP10 H0 ADS	JD5	300
W1	90x35-MGP10 H0 ADS	JD5	
W2	90x35-MGP10 H0 ADS	JD5	
W3	90x35-MGP10 H0 ADS	JD5	
W4	90x35-MGP10 H0 ADS	JD5	
TC2	90x35-MGP10 H0 ADS	JD5	300
W5	90x35-MGP10 H0 ADS	JD5	
W6	90x35-MGP10 H0 ADS	JD5	
W7	90x35-MGP10 H0 ADS	JD5	
W8	90x35-MGP10 H0 ADS	JD5	


- 15 more members were not shown -

Vertical Reactions at Supports

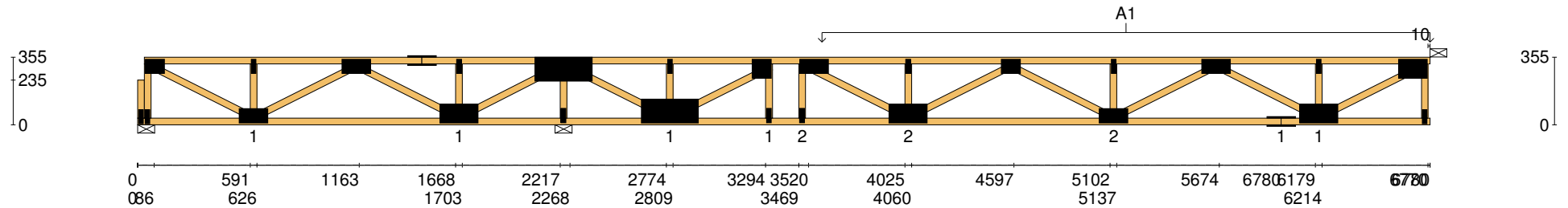
	S1	S2	S3
1.35DL (kN)	0.00	1.90	1.05
1.2DL + 1.5LL (kN)	0.46	7.72	3.49

Joint	Nail Plate	Joint	Nail Plate
BL1-1	25x75-MN	T8	100x100-MN
T1	75x100-MN	B5	25x75-MN
BL1	25x75-MN	T9	75x150-MN
B1	75x150-MN	B6	25x75-MN
T2	25x75-MN	B7	100x200-MN
T3	75x150-MN	T10	25x75-MN
T4	75x150-MN	T11	75x100-MN
B2	100x200-MN	B8	75x150-MN
T5	25x75-MN	T12	25x75-MN
T6	125x300-MN	T13	75x150-MN
B3	25x75-MN	B9	75x150-MN
B4	125x300-MN	B10	100x200-MN
T7	25x75-MN	T15	100x150-MN

- 2 more nail plates were not shown -


Span: 6780	Floor Material: Particle (15.4 kg/m²)	Application: General Areas	All dimensions in millimetres. This drawing should be read in conjunction with Multinail Technical sheets. Wall plates must be placed at supports only.	016020 (TN-016-020)
Overhang: 0/0	Floor Covering: Std Carpet + Underlay (8 kg/m²)	Live Load: 1.5 kPa		Ver: Floor 1.9.4
Spacing: 600	Ceiling Material: Plaster 10mm Supa Span (8.2 kg/m²)	Point Load: 1.8 kN		Date: 7/12/2018
Quantity: 1	Ceiling Fixing: Metal direct @ 600c	Design: AS 1720.1-2010		Page: 10 of 30

Client: D'ANDREA	Trusstech SA Pty Ltd 16 High St., Dry Creek, SA 5094	Job No: TT02360
Site: 50-52 WINDSOR ST MAGILL SA 5072 AUS		Weight: 42.09 kg
Ref: DWLG 1	Joist Name: FJ8 Type: SJ 355 Joists: FJ16	Total Weight: 42.09 kg
		Laminations: 1

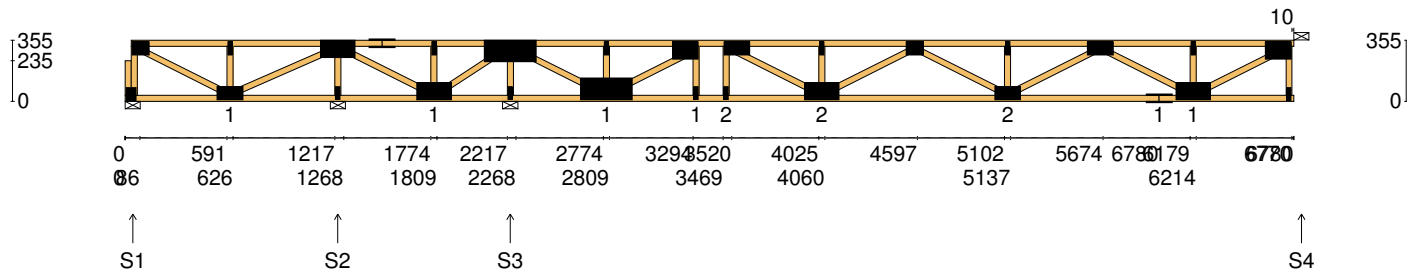


User Def. Load	A1 53.00 kg/m ² WET AREA
-----------------------	---

Applied Load	
DL (kN)	
LL (kN)	
WL Up (kN)	
WL Dn (kN)	

Span: 6780	Floor Material: Particle (15.4 kg/m²)	Application: General Areas	All dimensions in millimetres. This drawing should be read in conjunction with Multinail Technical sheets. Wall plates must be placed at supports only.	016020 (TN-016-020)
Overhang: 0/0	Floor Covering: Std Carpet + Underlay (8 kg/m²)	Live Load: 1.5 kPa		Ver: Floor 1.9.4
Spacing: 600	Ceiling Material: Plaster 10mm Supa Span (8.2 kg/m²)	Point Load: 1.8 kN		Date: 7/12/2018
Quantity: 1	Ceiling Fixing: Metal direct @ 600c	Design: AS 1720.1-2010		Page: 11 of 30

Client: D'ANDREA	Trusstech SA Pty Ltd 16 High St., Dry Creek, SA 5094	Job No: TT02360
Site: 50-52 WINDSOR ST MAGILL SA 5072 AUS		Weight: 42.75 kg
Ref: DWLG 1	Joist Name: FJ9 Type: SJ 355 Joists: FJ17	Total Weight: 42.75 kg
		Laminations: 1



TIMBER / PLATES

Member	Size	Plating	Restraint
BC1	90x35-MGP10 H0 ADS	JD5	600
LBlock1	90x35-MGP10 H0 ADS	JD5	
LEW1	90x35-MGP10 H0 ADS	JD5	
TC1	90x35-MGP10 H0 ADS	JD5	300
W1	90x35-MGP10 H0 ADS	JD5	
W2	90x35-MGP10 H0 ADS	JD5	
W3	90x35-MGP10 H0 ADS	JD5	
W4	90x35-MGP10 H0 ADS	JD5	
W5	90x35-MGP10 H0 ADS	JD5	
TC2	90x35-MGP10 H0 ADS	JD5	300
W6	90x35-MGP10 H0 ADS	JD5	
W7	90x35-MGP10 H0 ADS	JD5	
W8	90x35-MGP10 H0 ADS	JD5	


- 16 more members were not shown -

Vertical Reactions at Supports

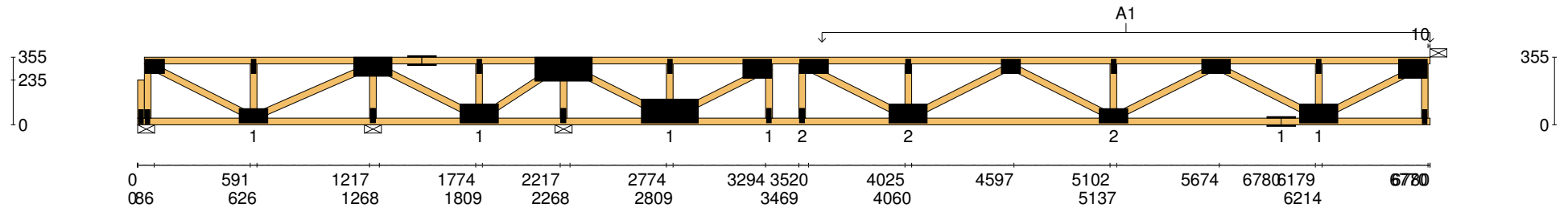
	S1	S2	S3	S4
1.35DL (kN)	0.10	-0.24	2.05	1.04
1.2DL + 1.5LL (kN)	0.57	-0.30	7.92	3.48

Joint	Nail Plate	Joint	Nail Plate
BL1-1	25x75-MN	T7	25x75-MN
T1	75x100-MN	T8	100x150-MN
BL1	25x75-MN	B6	25x75-MN
B1	75x150-MN	T9	75x150-MN
T2	25x75-MN	B7	25x75-MN
T3	100x200-MN	B8	100x200-MN
B2	25x75-MN	T10	25x75-MN
T4	75x150-MN	T11	75x100-MN
B3	100x200-MN	B9	75x150-MN
T5	25x75-MN	T12	25x75-MN
T6	125x300-MN	T13	75x150-MN
B4	25x75-MN	B10	75x150-MN
B5	125x300-MN	T15	100x150-MN

- 3 more nail plates were not shown -


Span: 6780	Floor Material: Particle (15.4 kg/m²)	Application: General Areas	All dimensions in millimetres. This drawing should be read in conjunction with Multinail Technical sheets. Wall plates must be placed at supports only.	016020 (TN-016-020)
Overhang: 0/0	Floor Covering: Std Carpet + Underlay (8 kg/m²)	Live Load: 1.5 kPa		Ver: Floor 1.9.4
Spacing: 600	Ceiling Material: Plaster 10mm Supa Span (8.2 kg/m²)	Point Load: 1.8 kN		Date: 7/12/2018
Quantity: 1	Ceiling Fixing: Metal direct @ 600c	Design: AS 1720.1-2010		Page: 12 of 30

Client: D'ANDREA	Trusstech SA Pty Ltd 16 High St., Dry Creek, SA 5094	Job No: TT02360
Site: 50-52 WINDSOR ST MAGILL SA 5072 AUS		Weight: 42.75 kg
Ref: DWLG 1	Joist Name: FJ9 Type: SJ 355 Joists: FJ17	Total Weight: 42.75 kg
		Laminations: 1

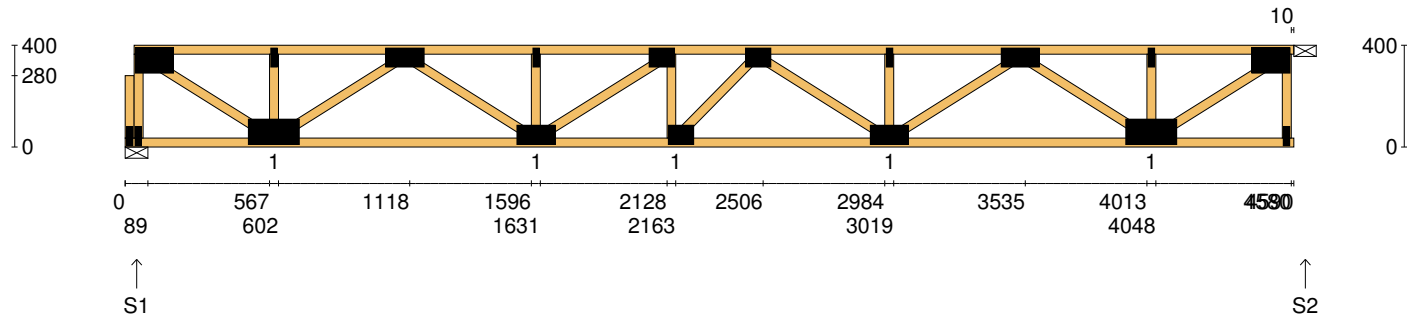


User Def. Load	A1 53.00 kg/m ² WET AREA
-----------------------	---

Applied Load	
DL (kN)	
LL (kN)	
WL Up (kN)	
WL Dn (kN)	

Span: 6780	Floor Material: Particle (15.4 kg/m²)	Application: General Areas	All dimensions in millimetres. This drawing should be read in conjunction with Multinail Technical sheets. Wall plates must be placed at supports only.	016020 (TN-016-020)
Overhang: 0/0	Floor Covering: Std Carpet + Underlay (8 kg/m²)	Live Load: 1.5 kPa		Ver: Floor 1.9.4
Spacing: 600	Ceiling Material: Plaster 10mm Supa Span (8.2 kg/m²)	Point Load: 1.8 kN		Date: 7/12/2018
Quantity: 1	Ceiling Fixing: Metal direct @ 600c	Design: AS 1720.1-2010		Page: 13 of 30

Client: D'ANDREA	Trusstech SA Pty Ltd 16 High St., Dry Creek, SA 5094	Job No: TT02360
Site: 50-52 WINDSOR ST MAGILL SA 5072 AUS		Weight: 28.88 kg
Ref: DWLG 1	Joist Name: FJ10 Type: SJ 400 Joists: FJ18, FJ25	Total Weight: 57.75 kg
		Laminations: 1



TIMBER / PLATES


Member	Size	Plating	Restraint
BC1	90x35-MGP10 H0 ADS	JD5	600
LBlock1	90x35-MGP10 H0 ADS	JD5	
LEW1	90x35-MGP10 H0 ADS	JD5	
TC1	90x35-MGP10 H0 ADS	JD5	300
W1	90x35-MGP10 H0 ADS	JD5	
W2	90x35-MGP10 H0 ADS	JD5	
W3	90x35-MGP10 H0 ADS	JD5	
W4	90x35-MGP10 H0 ADS	JD5	
W5	90x35-MGP10 H0 ADS	JD5	
W6	90x35-MGP10 H0 ADS	JD5	
W7	90x35-MGP10 H0 ADS	JD5	
W8	90x35-MGP10 H0 ADS	JD5	
W9	90x35-MGP10 H0 ADS	JD5	

- 6 more members were not shown -

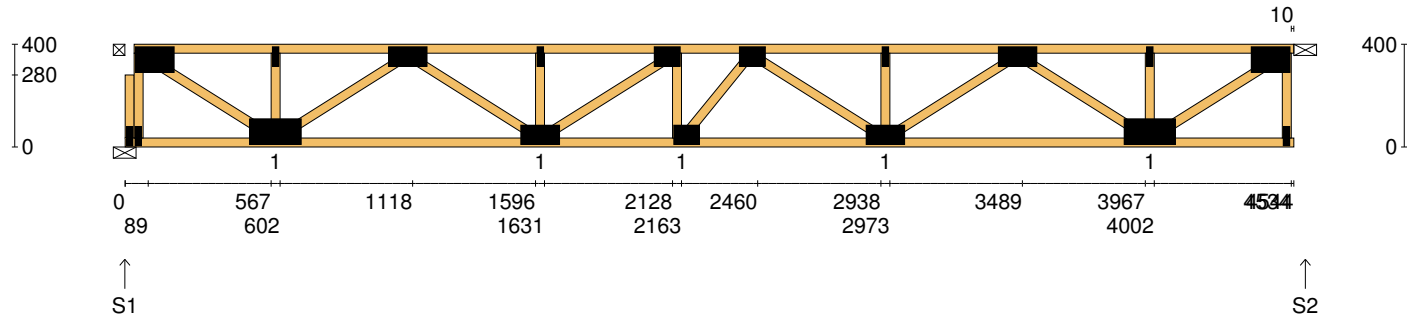
Vertical Reactions at Supports

	S1	S2
1.35DL (kN)	0.75	0.75
1.2DL + 1.5LL (kN)	3.71	3.71

Joint	Nail Plate	Joint	Nail Plate
BL1-1	25x75-MN	T8	75x150-MN
T1	100x150-MN	B5	100x200-MN
BL1	25x75-MN	T9	25x75-MN
B1	100x200-MN	BR1	25x75-MN
T2	25x75-MN	T10	100x150-MN
T3	75x150-MN		
B2	75x150-MN		
T4	25x75-MN		
T5	75x100-MN		
B3	75x100-MN		
T6	75x100-MN		
B4	75x150-MN		
T7	25x75-MN		

Span: 4590	Floor Material: Particle (15.4 kg/m²)	Application: General Areas	All dimensions in millimetres. This drawing should be read in conjunction with Multinail Technical sheets. Wall plates must be placed at supports only.	016020 (TN-016-020)
Overhang: 0/0	Floor Covering: Std Carpet + Underlay (8 kg/m²)	Live Load: 1.5 kPa		Ver: Floor 1.9.4
Spacing: 600	Ceiling Material: Plaster 10mm Supa Span (8.2 kg/m²)	Point Load: 1.8 kN		Date: 7/12/2018
Quantity: 2	Ceiling Fixing: Metal direct @ 600c	Design: AS 1720.1-2010		Page: 14 of 30

Client: D'ANDREA	Trusstech SA Pty Ltd 16 High St., Dry Creek, SA 5094	Job No: TT02360
Site: 50-52 WINDSOR ST MAGILL SA 5072 AUS		Weight: 28.68 kg
Ref: DWLG 1	Joist Name: FJ11 Type: SJ 400 Joists: FJ19, FJ20, FJ21, FJ26	Total Weight: 114.74 kg
		Laminations: 1



TIMBER / PLATES


Member	Size	Plating	Restraint
BC1	90x35-MGP10 H0 ADS	JD5	600
LBlock1	90x35-MGP10 H0 ADS	JD5	
LEW1	90x35-MGP10 H0 ADS	JD5	
TC1	90x35-MGP10 H0 ADS	JD5	300
W1	90x35-MGP10 H0 ADS	JD5	
W2	90x35-MGP10 H0 ADS	JD5	
W3	90x35-MGP10 H0 ADS	JD5	
W4	90x35-MGP10 H0 ADS	JD5	
W5	90x35-MGP10 H0 ADS	JD5	
W6	90x35-MGP10 H0 ADS	JD5	
W7	90x35-MGP10 H0 ADS	JD5	
W8	90x35-MGP10 H0 ADS	JD5	
W9	90x35-MGP10 H0 ADS	JD5	

- 6 more members were not shown -

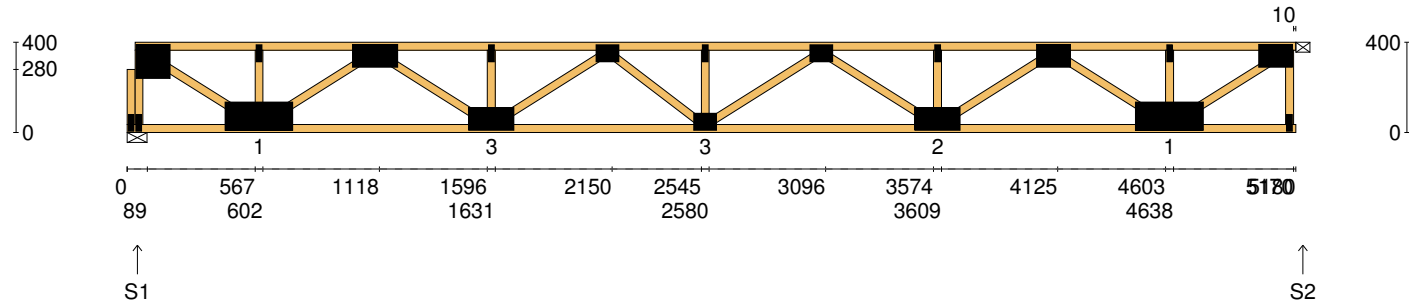
Vertical Reactions at Supports

	S1	S2
1.35DL (kN)	0.75	0.74
1.2DL + 1.5LL (kN)	3.68	3.67

Joint	Nail Plate	Joint	Nail Plate
BL1-1	25x75-MN	T8	75x150-MN
T1	100x150-MN	B5	100x200-MN
BL1	25x75-MN	T9	25x75-MN
B1	100x200-MN	BR1	25x75-MN
T2	25x75-MN	T10	100x150-MN
T3	75x150-MN		
B2	75x150-MN		
T4	25x75-MN		
T5	75x100-MN		
B3	75x100-MN		
T6	75x100-MN		
B4	75x150-MN		
T7	25x75-MN		

Span: 4544	Floor Material: Particle (15.4 kg/m²)	Application: General Areas	All dimensions in millimetres. This drawing should be read in conjunction with Multinail Technical sheets. Wall plates must be placed at supports only.	016020 (TN-016-020)
Overhang: 0/0	Floor Covering: Std Carpet + Underlay (8 kg/m²)	Live Load: 1.5 kPa		Ver: Floor 1.9.4
Spacing: 600	Ceiling Material: Plaster 10mm Supa Span (8.2 kg/m²)	Point Load: 1.8 kN		Date: 7/12/2018
Quantity: 4	Ceiling Fixing: Metal direct @ 600c	Design: AS 1720.1-2010		Page: 15 of 30

Client: D'ANDREA	Trusstech SA Pty Ltd 16 High St., Dry Creek, SA 5094	Job No: TT02360
Site: 50-52 WINDSOR ST MAGILL SA 5072 AUS		Weight: 33.03 kg
Ref: DWLG 1	Joist Name: FJ12 Type: SJ 400 Joists: FJ22	Total Weight: 33.03 kg
		Laminations: 1



TIMBER / PLATES


Member	Size	Plating	Restraint
BC1	90x35-MGP10 H0 ADS	JD5	600
LBlock1	90x35-MGP10 H0 ADS	JD5	
LEW1	90x35-MGP10 H0 ADS	JD5	
TC1	90x35-MGP10 H0 ADS	JD5	300
W1	90x35-MGP10 H0 ADS	JD5	
W2	90x35-MGP10 H0 ADS	JD5	
W3	90x35-MGP10 H0 ADS	JD5	
W4	90x35-MGP10 H0 ADS	JD5	
W5	90x35-MGP10 H0 ADS	JD5	
W6	90x35-MGP10 H0 ADS	JD5	
W7	90x35-MGP10 H0 ADS	JD5	
W8	90x35-MGP10 H0 ADS	JD5	
W9	90x35-MGP10 H0 ADS	JD5	

- 7 more members were not shown -

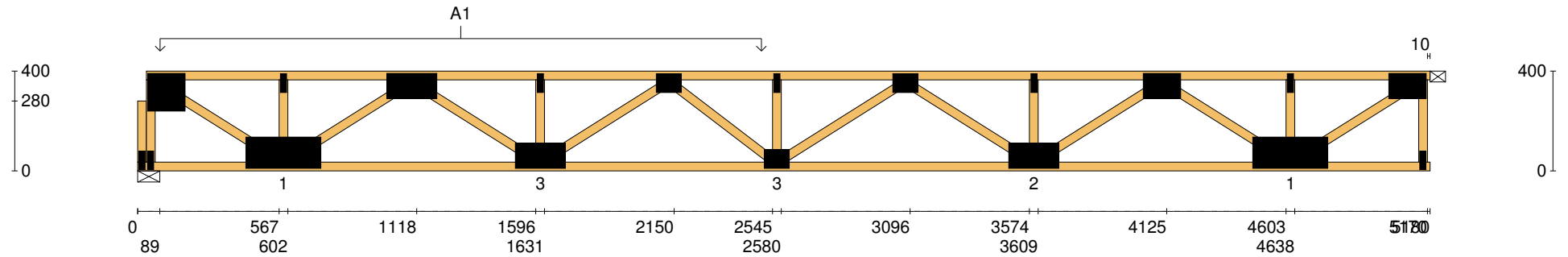
Vertical Reactions at Supports


	S1	S2
1.35DL (kN)	1.55	1.07
1.2DL + 1.5LL (kN)	5.42	4.59

Joint	Nail Plate	Joint	Nail Plate
BL1-1	25x75-MN	T8	25x75-MN
T1	150x150-MN	T9	100x150-MN
BL1	25x75-MN	B5	125x300-MN
B1	125x300-MN	T10	25x75-MN
T2	25x75-MN	BR1	25x75-MN
T3	100x200-MN	T11	100x150-MN
B2	100x200-MN		
T4	25x75-MN		
T5	75x100-MN		
B3	75x100-MN		
T6	25x75-MN		
T7	75x100-MN		
B4	100x200-MN		

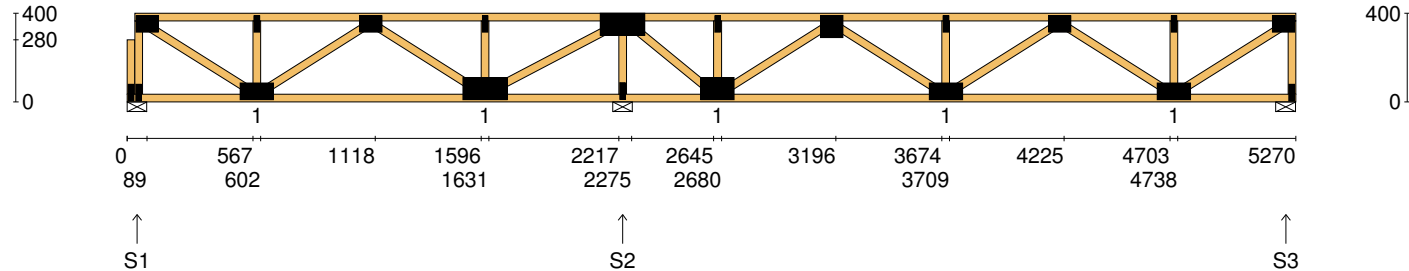
Span: 5180	Floor Material: Particle (15.4 kg/m²)	Application: General Areas	All dimensions in millimetres. This drawing should be read in conjunction with Multinail Technical sheets. Wall plates must be placed at supports only.	016020 (TN-016-020)
Overhang: 0/0	Floor Covering: Std Carpet + Underlay (8 kg/m²)	Live Load: 1.5 kPa		Ver: Floor 1.9.4
Spacing: 600	Ceiling Material: Plaster 10mm Supa Span (8.2 kg/m²)	Point Load: 1.8 kN		Date: 7/12/2018
Quantity: 1	Ceiling Fixing: Metal direct @ 600c	Design: AS 1720.1-2010		Page: 16 of 30

Client: D'ANDREA	Trusstech SA Pty Ltd 16 High St., Dry Creek, SA 5094	Job No: TT02360
Site: 50-52 WINDSOR ST MAGILL SA 5072 AUS		Weight: 33.03 kg
Ref: DWLG 1	Joist Name: FJ12 Type: SJ 400 Joists: FJ22	Total Weight: 33.03 kg
		Laminations: 1



User Def. Load		A1 190.52 kg/m ² WET AREA	
Applied Load			
DL	(kN)		
LL	(kN)		
WL Up	(kN)		
WL Dn	(kN)		
Span:	5180	Floor Material:	Particle (15.4 kg/m ²)
Overhang:	0/0	Floor Covering:	Std Carpet + Underlay (8 kg/m ²)
Spacing:	600	Ceiling Material:	Plaster 10mm Supa Span (8.2 kg/m ²)
Quantity:	1	Ceiling Fixing:	Metal direct @ 600c
		Application:	General Areas
		Live Load:	1.5 kPa
		Point Load:	1.8 kN
		Design:	AS 1720.1-2010
All dimensions in millimetres. This drawing should be read in conjunction with Multinail Technical sheets. Wall plates must be placed at supports only.			
			
		016020 (TN-016-020)	
		Ver: Floor 1.9.4	
		Date: 7/12/2018	
		Page: 17 of 30	

Client: D'ANDREA	Trusstech SA Pty Ltd 16 High St., Dry Creek, SA 5094	Job No: TT02360
Site: 50-52 WINDSOR ST MAGILL SA 5072 AUS		Weight: 32.56 kg
Ref: DWLG 1	Joist Name: FJ13 Type: SJ 400 Joists: FJ23	Total Weight: 32.56 kg
		Laminations: 1



TIMBER / PLATES


Member	Size	Plating	Restraint
BC1	90x35-MGP10 H0 ADS	JD5	600
LBlock1	90x35-MGP10 H0 ADS	JD5	
LEW1	90x35-MGP10 H0 ADS	JD5	
TC1	90x35-MGP10 H0 ADS	JD5	300
W1	90x35-MGP10 H0 ADS	JD5	
W2	90x35-MGP10 H0 ADS	JD5	
W3	90x35-MGP10 H0 ADS	JD5	
W4	90x35-MGP10 H0 ADS	JD5	
W5	90x35-MGP10 H0 ADS	JD5	
W6	90x35-MGP10 H0 ADS	JD5	
W7	90x35-MGP10 H0 ADS	JD5	
W8	90x35-MGP10 H0 ADS	JD5	
W9	90x35-MGP10 H0 ADS	JD5	

- 8 more members were not shown -

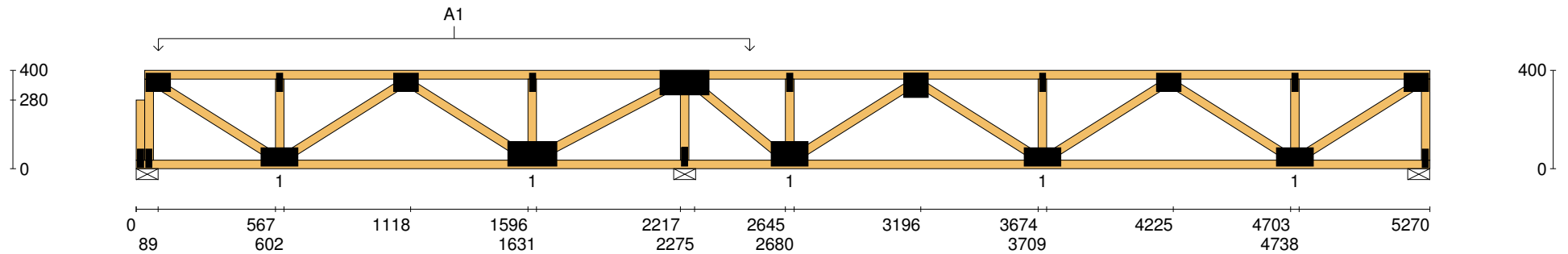
Vertical Reactions at Supports


	S1	S2	S3
1.35DL (kN)	0.62	1.64	0.39
1.2DL + 1.5LL (kN)	1.85	6.31	2.02

Joint	Nail Plate	Joint	Nail Plate
BL1-1	25x75-MN	B5	75x150-MN
T1	75x100-MN	T8	25x75-MN
BL1	25x75-MN	T9	75x100-MN
B1	75x150-MN	B6	75x150-MN
T2	25x75-MN	T10	25x75-MN
T3	75x100-MN	BR1	25x75-MN
B2	100x200-MN	T11	75x100-MN
T4	25x75-MN		
T5	100x200-MN		
B3	25x75-MN		
B4	100x150-MN		
T6	25x75-MN		
T7	100x100-MN		

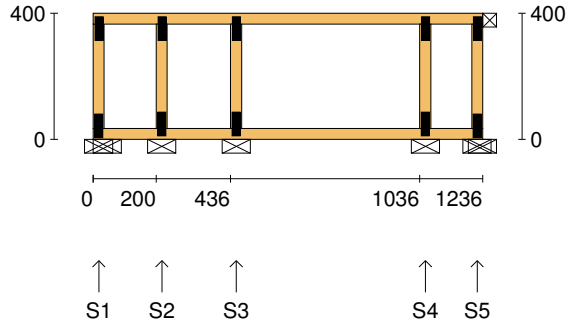
Span: 5270	Floor Material: Particle (15.4 kg/m²)	Application: General Areas	All dimensions in millimetres. This drawing should be read in conjunction with Multinail Technical sheets. Wall plates must be placed at supports only.	016020 (TN-016-020)
Overhang: 0/0	Floor Covering: Std Carpet + Underlay (8 kg/m²)	Live Load: 1.5 kPa		Ver: Floor 1.9.4
Spacing: 600	Ceiling Material: Plaster 10mm Supa Span (8.2 kg/m²)	Point Load: 1.8 kN		Date: 7/12/2018
Quantity: 1	Ceiling Fixing: Metal direct @ 600c	Design: AS 1720.1-2010		Page: 18 of 30

Client: D'ANDREA	Trusstech SA Pty Ltd 16 High St., Dry Creek, SA 5094 Joist Name: FJ13 Type: SJ 400 Joists: FJ23	Job No:	TT02360
Site: 50-52 WINDSOR ST MAGILL SA 5072 AUS		Weight:	32.56 kg
Ref: DWLG 1		Total Weight:	32.56 kg
		Laminations:	1



User Def. Load		A1 190.52 kg/m ² WET AREA			
Applied Load					
DL	(kN)				
LL	(kN)				
WL Up	(kN)				
WL Dn	(kN)				
Span:	5270	Floor Material:	Particle (15.4 kg/m²)	Application:	General Areas
Overhang:	0/0	Floor Covering:	Std Carpet + Underlay (8 kg/m²)	Live Load:	1.5 kPa
Spacing:	600	Ceiling Material:	Plaster 10mm Supa Span (8.2 kg/m²)	Point Load:	1.8 kN
Quantity:	1	Ceiling Fixing:	Metal direct @ 600c	Design:	AS 1720.1-2010
All dimensions in millimetres. This drawing should be read in conjunction with Multinail Technical sheets. Wall plates must be placed at supports only.					
					
				016020 (TN-016-020)	
				Ver: Floor 1.9.4	
				Date: 7/12/2018	
				Page: 19 of 30	

Client: D'ANDREA	Trusstech SA Pty Ltd 16 High St., Dry Creek, SA 5094 Joist Name: FJ14 Type: SJ 400 Ladder Joists: FJ24	Job No: TT02360
Site: 50-52 WINDSOR ST MAGILL SA 5072 AUS		Weight: 6.83 kg
Ref: DWLG 1		Total Weight: 6.83 kg
		Laminations: 1



TIMBER / PLATES


Member	Size	Plating	Restraint
BC1	90x35-MGP10 H0 ADS	JD5	600
LEW1	90x35-MGP10 H0 ADS	JD5	
TC1	90x35-MGP10 H0 ADS	JD5	300
W1	90x35-MGP10 H0 ADS	JD5	
W2	90x35-MGP10 H0 ADS	JD5	
W3	90x35-MGP10 H0 ADS	JD5	
REW1	90x35-MGP10 H0 ADS	JD5	

Vertical Reactions at Supports

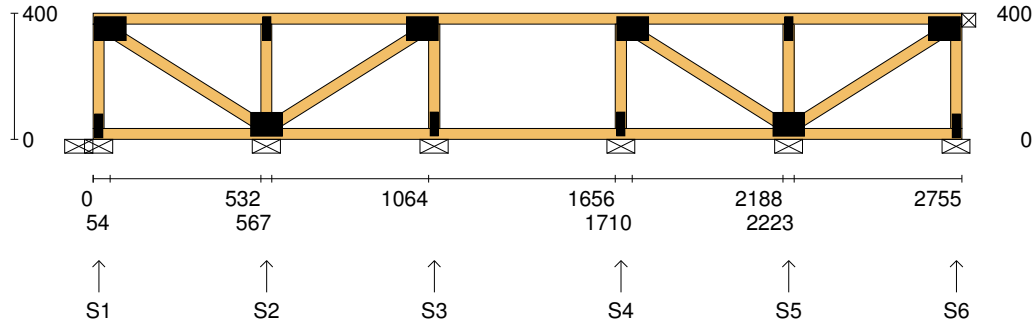
	S1	S2	S3	S4	S5
1.35DL (kN)	0.04	0.04	0.16	0.17	-0.01
1.2DL + 1.5LL (kN)	0.17	0.18	0.85	0.88	-0.11

Joint Nail Plate

TL1	25x75-MN
BL2	25x75-MN
T1	25x75-MN
B1	25x75-MN
T2	25x75-MN
B2	25x75-MN
T3	25x75-MN
B3	25x75-MN
TR1	25x75-MN
BR2	25x75-MN

Span: 1236	Floor Material: Particle (15.4 kg/m²)	Application: General Areas	All dimensions in millimetres. This drawing should be read in conjunction with Multinail Technical sheets. Wall plates must be placed at supports only.	016020 (TN-016-020)
Overhang: 0/0	Floor Covering: Std Carpet + Underlay (8 kg/m²)	Live Load: 1.5 kPa		Ver: Floor 1.9.4
Spacing: 600	Ceiling Material: Plaster 10mm Supa Span (8.2 kg/m²)	Point Load: 1.8 kN		Date: 7/12/2018
Quantity: 1	Ceiling Fixing: Metal direct @ 600c	Design: AS 1720.1-2010		Page: 20 of 30

Client: D'ANDREA	Trusstech SA Pty Ltd 16 High St., Dry Creek, SA 5094 Joist Name: FJ15 Type: SJ 400 Ladder Joists: FJ27	Job No: TT02360
Site: 50-52 WINDSOR ST MAGILL SA 5072 AUS		Weight: 16.40 kg
Ref: DWLG 1		Total Weight: 16.40 kg
		Laminations: 1



TIMBER / PLATES


Member	Size	Plating	Restraint
BC1	90x35-MGP10 H0 ADS	JD5	600
LEW1	90x35-MGP10 H0 ADS	JD5	
TC1	90x35-MGP10 H0 ADS	JD5	300
W1	90x35-MGP10 H0 ADS	JD5	
W2	90x35-MGP10 H0 ADS	JD5	
W3	90x35-MGP10 H0 ADS	JD5	
W4	90x35-MGP10 H0 ADS	JD5	
W5	90x35-MGP10 H0 ADS	JD5	
W6	90x35-MGP10 H0 ADS	JD5	
W7	90x35-MGP10 H0 ADS	JD5	
W8	90x35-MGP10 H0 ADS	JD5	
REW1	90x35-MGP10 H0 ADS	JD5	

Vertical Reactions at Supports

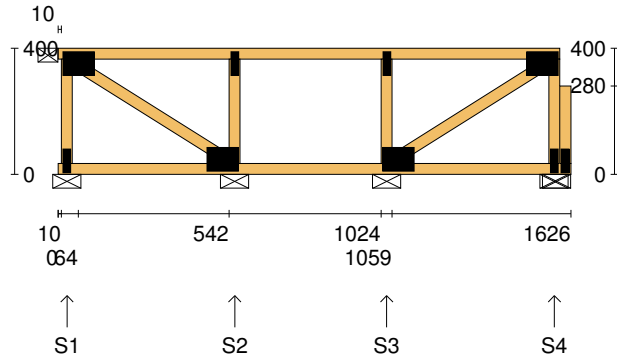
	S1	S2	S3	S4	S5	S6
1.35DL (kN)	0.07	0.22	0.16	0.16	0.22	0.07
1.2DL + 1.5LL (kN)	0.31	1.11	0.82	0.82	1.11	0.31

Joint Nail Plate

T1	75x100-MN
BL1	25x75-MN
B1	75x100-MN
T2	25x75-MN
T3	75x100-MN
B2	25x75-MN
T4	75x100-MN
B3	25x75-MN
B4	75x100-MN
T5	25x75-MN
BR1	25x75-MN
T6	75x100-MN

Span: 2755	Floor Material: Particle (15.4 kg/m²)	Application: General Areas	All dimensions in millimetres. This drawing should be read in conjunction with Multinail Technical sheets. Wall plates must be placed at supports only.	016020 (TN-016-020)
Overhang: 0/0	Floor Covering: Std Carpet + Underlay (8 kg/m²)	Live Load: 1.5 kPa		Ver: Floor 1.9.4
Spacing: 600	Ceiling Material: Plaster 10mm Supa Span (8.2 kg/m²)	Point Load: 1.8 kN		Date: 7/12/2018
Quantity: 1	Ceiling Fixing: Metal direct @ 600c	Design: AS 1720.1-2010		Page: 21 of 30

Client: D'ANDREA	Trusstech SA Pty Ltd 16 High St., Dry Creek, SA 5094 Joist Name: FJ16 Type: SJ 400 Ladder Joists: FJ28	Job No: TT02360
Site: 50-52 WINDSOR ST MAGILL SA 5072 AUS		Weight: 10.04 kg
Ref: DWLG 1		Total Weight: 10.04 kg
		Laminations: 1



TIMBER / PLATES


Member	Size	Plating	Restraint
BC1	90x35-MGP10 H0 ADS	JD5	600
TC1	90x35-MGP10 H0 ADS	JD5	300
LEW1	90x35-MGP10 H0 ADS	JD5	
W1	90x35-MGP10 H0 ADS	JD5	
W2	90x35-MGP10 H0 ADS	JD5	
W3	90x35-MGP10 H0 ADS	JD5	
W4	90x35-MGP10 H0 ADS	JD5	
REW1	90x35-MGP10 H0 ADS	JD5	
RBlock1	90x35-MGP10 H0 ADS	JD5	

Vertical Reactions at Supports

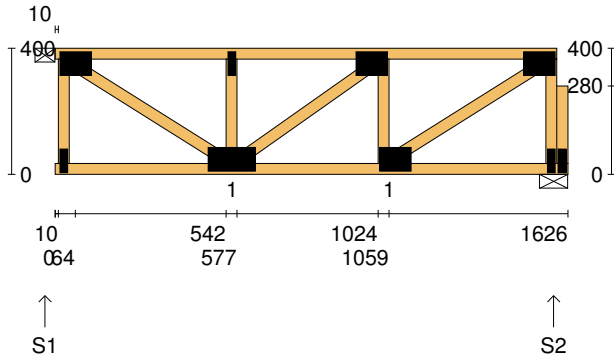
	S1	S2	S3	S4
1.35DL (kN)	0.07	0.18	0.18	0.08
1.2DL + 1.5LL (kN)	0.33	0.94	0.94	0.34

Joint Nail Plate

T1	75x100-MN
BL1	25x75-MN
B1	75x100-MN
T2	25x75-MN
B2	75x100-MN
T3	25x75-MN
BR1	25x75-MN
T4	75x100-MN
BR1-1	25x75-MN

Span: 1626	Floor Material: Particle (15.4 kg/m²)	Application: General Areas	All dimensions in millimetres. This drawing should be read in conjunction with Multinail Technical sheets. Wall plates must be placed at supports only.	016020 (TN-016-020)
Overhang: 0/0	Floor Covering: Std Carpet + Underlay (8 kg/m²)	Live Load: 1.5 kPa		Ver: Floor 1.9.4
Spacing: 600	Ceiling Material: Plaster 10mm Supa Span (8.2 kg/m²)	Point Load: 1.8 kN		Date: 7/12/2018
Quantity: 1	Ceiling Fixing: Metal direct @ 600c	Design: AS 1720.1-2010		Page: 22 of 30

Client: D'ANDREA	Trusstech SA Pty Ltd 16 High St., Dry Creek, SA 5094	Job No: TT02360
Site: 50-52 WINDSOR ST MAGILL SA 5072 AUS		Weight: 11.03 kg
Ref: DWLG 1	Joist Name: FJ17 Type: SJ 400 Joists: FJ29, FJ30, FJ31, FJ32, FJ33, FJ34	Total Weight: 66.19 kg
		Laminations: 1



TIMBER / PLATES


Member	Size	Plating	Restraint
BC1	90x35-MGP10 H0 ADS	JD5	600
TC1	90x35-MGP10 H0 ADS	JD5	300
LEW1	90x35-MGP10 H0 ADS	JD5	
W1	90x35-MGP10 H0 ADS	JD5	
W2	90x35-MGP10 H0 ADS	JD5	
W3	90x35-MGP10 H0 ADS	JD5	
W4	90x35-MGP10 H0 ADS	JD5	
W5	90x35-MGP10 H0 ADS	JD5	
REW1	90x35-MGP10 H0 ADS	JD5	
RBlock1	90x35-MGP10 H0 ADS	JD5	

Vertical Reactions at Supports

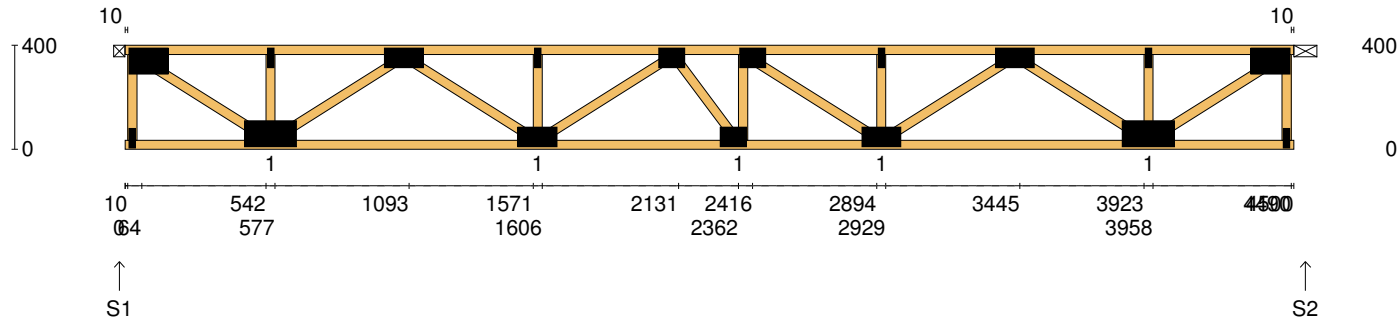
	S1	S2
1.35DL (kN)	0.26	0.27
1.2DL + 1.5LL (kN)	1.28	1.28

Joint Nail Plate

T1	75x100-MN
BL1	25x75-MN
B1	75x150-MN
T2	25x75-MN
T3	75x100-MN
B2	75x100-MN
BR1	25x75-MN
T4	75x100-MN
BR1-1	25x75-MN

Span: 1626	Floor Material: Particle (15.4 kg/m²)	Application: General Areas	All dimensions in millimetres. This drawing should be read in conjunction with Multinail Technical sheets. Wall plates must be placed at supports only.	016020 (TN-016-020)
Overhang: 0/0	Floor Covering: Std Carpet + Underlay (8 kg/m²)	Live Load: 1.5 kPa		Ver: Floor 1.9.4
Spacing: 600	Ceiling Material: Plaster 10mm Supa Span (8.2 kg/m²)	Point Load: 1.8 kN		Date: 7/12/2018
Quantity: 6	Ceiling Fixing: Metal direct @ 600c	Design: AS 1720.1-2010		Page: 23 of 30

Client: D'ANDREA	Trusstech SA Pty Ltd 16 High St., Dry Creek, SA 5094	Job No: TT02360
Site: 50-52 WINDSOR ST MAGILL SA 5072 AUS		Weight: 28.16 kg
Ref: DWLG 1	Joist Name: FJ18 Type: SJ 400 Joists: FJ35	Total Weight: 28.16 kg
		Laminations: 1



TIMBER / PLATES


Member	Size	Plating	Restraint
BC1	90x35-MGP10 H0 ADS	JD5	600
TC1	90x35-MGP10 H0 ADS	JD5	300
LEW1	90x35-MGP10 H0 ADS	JD5	
W1	90x35-MGP10 H0 ADS	JD5	
W2	90x35-MGP10 H0 ADS	JD5	
W3	90x35-MGP10 H0 ADS	JD5	
W4	90x35-MGP10 H0 ADS	JD5	
W5	90x35-MGP10 H0 ADS	JD5	
W6	90x35-MGP10 H0 ADS	JD5	
W7	90x35-MGP10 H0 ADS	JD5	
W8	90x35-MGP10 H0 ADS	JD5	
W9	90x35-MGP10 H0 ADS	JD5	
W10	90x35-MGP10 H0 ADS	JD5	

- 5 more members were not shown -

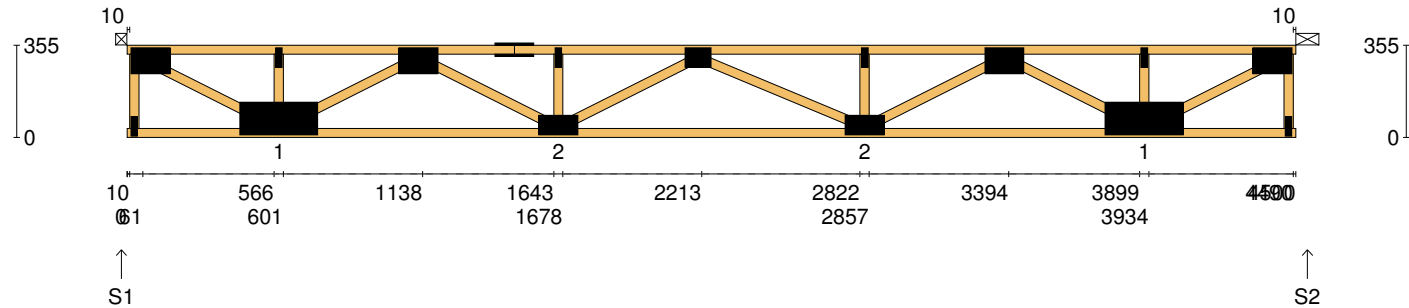
Vertical Reactions at Supports

	S1	S2
1.35DL (kN)	0.74	0.74
1.2DL + 1.5LL (kN)	3.66	3.66

Joint	Nail Plate	Joint	Nail Plate
T1	100x150-MN	B5	100x200-MN
BL1	25x75-MN	T9	25x75-MN
B1	100x200-MN	BR1	25x75-MN
T2	25x75-MN	T10	100x150-MN
T3	75x150-MN		
B2	75x150-MN		
T4	25x75-MN		
T5	75x100-MN		
B3	75x100-MN		
T6	75x100-MN		
B4	75x150-MN		
T7	25x75-MN		
T8	75x150-MN		

Span: 4500	Floor Material: Particle (15.4 kg/m²)	Application: General Areas	All dimensions in millimetres. This drawing should be read in conjunction with Multinail Technical sheets. Wall plates must be placed at supports only.	016020 (TN-016-020)
Overhang: 0/0	Floor Covering: Std Carpet + Underlay (8 kg/m²)	Live Load: 1.5 kPa		Ver: Floor 1.9.4
Spacing: 600	Ceiling Material: Plaster 10mm Supa Span (8.2 kg/m²)	Point Load: 1.8 kN		Date: 7/12/2018
Quantity: 1	Ceiling Fixing: Metal direct @ 600c	Design: AS 1720.1-2010		Page: 24 of 30

Client: D'ANDREA	Trusstech SA Pty Ltd 16 High St., Dry Creek, SA 5094	Job No: TT02360
Site: 50-52 WINDSOR ST MAGILL SA 5072 AUS		Weight: 27.44 kg
Ref: DWLG 1	Joist Name: FJ19 Type: SJ 355 Joists: FJ36	Total Weight: 27.44 kg
		Laminations: 1



TIMBER / PLATES


Member	Size	Plating	Restraint
BC1	90x35-MGP10 H0 ADS	JD5	600
TC1	90x35-MGP10 H0 ADS	JD5	300
LEW1	90x35-MGP10 H0 ADS	JD5	
W1	90x35-MGP10 H0 ADS	JD5	
W2	90x35-MGP10 H0 ADS	JD5	
W3	90x35-MGP10 H0 ADS	JD5	
W4	90x35-MGP10 H0 ADS	JD5	
TC2	90x35-MGP10 H0 ADS	JD5	300
W5	90x35-MGP10 H0 ADS	JD5	
W6	90x35-MGP10 H0 ADS	JD5	
W7	90x35-MGP10 H0 ADS	JD5	
W8	90x35-MGP10 H0 ADS	JD5	
W9	90x35-MGP10 H0 ADS	JD5	

- 4 more members were not shown -

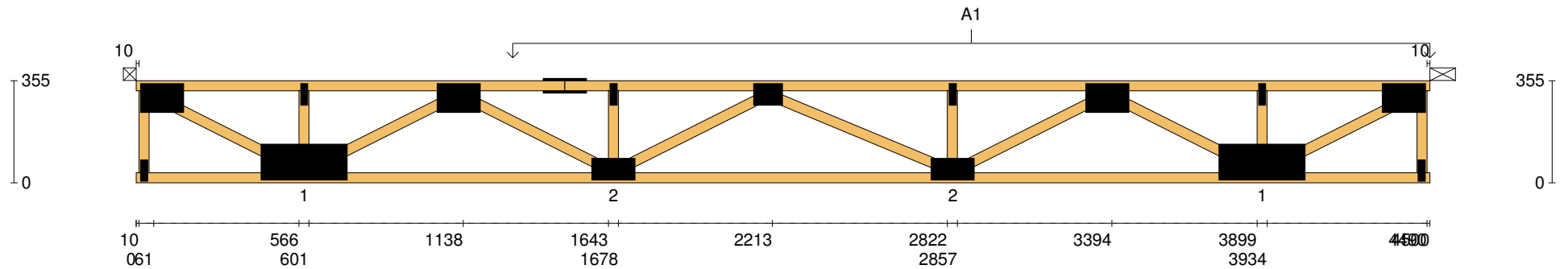
Vertical Reactions at Supports

	S1	S2
1.35DL (kN)	0.99	1.21
1.2DL + 1.5LL (kN)	3.88	4.07

Joint	Nail Plate	Joint	Nail Plate
T1	100x150-MN	T9	25x75-MN
BL1	25x75-MN	BR1	25x75-MN
B1	125x300-MN	T10	100x150-MN
T2	25x75-MN		
T3	100x150-MN		
T4	75x150-MN		
B2	75x150-MN		
T5	25x75-MN		
T6	75x100-MN		
B3	75x150-MN		
T7	25x75-MN		
T8	100x150-MN		
B4	125x300-MN		

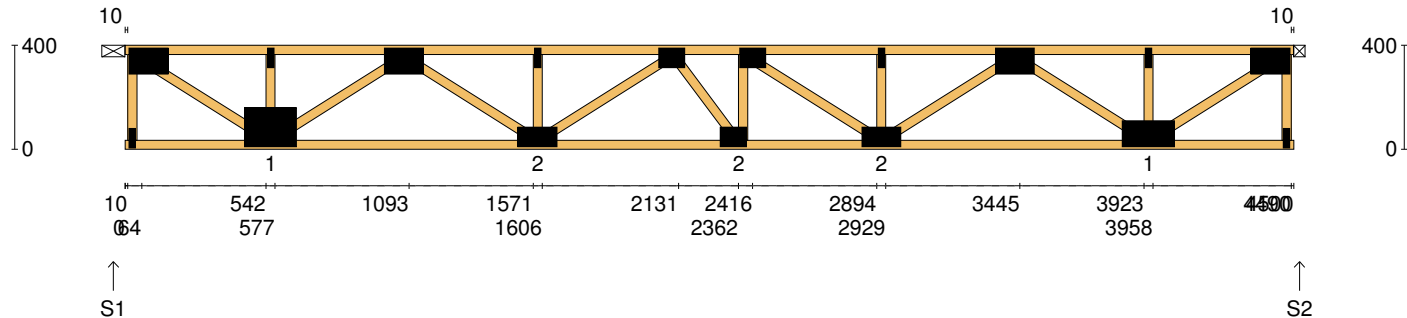
Span: 4500	Floor Material: Particle (15.4 kg/m²)	Application: General Areas	All dimensions in millimetres. This drawing should be read in conjunction with Multinail Technical sheets. Wall plates must be placed at supports only.	016020 (TN-016-020)
Overhang: 0/0	Floor Covering: Std Carpet + Underlay (8 kg/m²)	Live Load: 1.5 kPa		Ver: Floor 1.9.4
Spacing: 600	Ceiling Material: Plaster 10mm Supa Span (8.2 kg/m²)	Point Load: 1.8 kN		Date: 7/12/2018
Quantity: 1	Ceiling Fixing: Metal direct @ 600c	Design: AS 1720.1-2010		Page: 25 of 30

Client: D'ANDREA	Trusstech SA Pty Ltd 16 High St., Dry Creek, SA 5094 Joist Name: FJ19 Type: SJ 355 Joists: FJ36	Job No:	TT02360
Site: 50-52 WINDSOR ST MAGILL SA 5072 AUS		Weight:	27.44 kg
Ref: DWLG 1		Total Weight:	27.44 kg
		Laminations:	1



User Def. Load		A1 53.00 kg/m² WET AREA	
Applied Load			
DL	(kN)		
LL	(kN)		
WL Up	(kN)		
WL Dn	(kN)		
Span:	4500	Floor Material:	Particle (15.4 kg/m²)
Overhang:	0/0	Floor Covering:	Std Carpet + Underlay (8 kg/m²)
Spacing:	600	Ceiling Material:	Plaster 10mm Supa Span (8.2 kg/m²)
Quantity:	1	Ceiling Fixing:	Metal direct @ 600c
		Application:	General Areas
		Live Load:	1.5 kPa
		Point Load:	1.8 kN
		Design:	AS 1720.1-2010
All dimensions in millimetres. This drawing should be read in conjunction with Multinail Technical sheets. Wall plates must be placed at supports only.			
		016020 (TN-016-020)	
		Ver:	Floor 1.9.4
		Date:	7/12/2018
		Page:	26 of 30

Client: D'ANDREA	Trusstech SA Pty Ltd 16 High St., Dry Creek, SA 5094	Job No: TT02360
Site: 50-52 WINDSOR ST MAGILL SA 5072 AUS		Weight: 28.46 kg
Ref: DWL G 1	Joist Name: FJ20 Type: SJ 400 Joists: FJ37	Total Weight: 28.46 kg
		Laminations: 1



TIMBER / PLATES


Member	Size	Plating	Restraint
BC1	90x35-MGP10 H0 ADS	JD5	600
TC1	90x35-MGP10 H0 ADS	JD5	300
LEW1	90x35-MGP10 H0 ADS	JD5	
W1	90x35-MGP10 H0 ADS	JD5	
W2	90x35-MGP10 H0 ADS	JD5	
W3	90x35-MGP10 H0 ADS	JD5	
W4	90x35-MGP10 H0 ADS	JD5	
W5	90x35-MGP10 H0 ADS	JD5	
W6	90x35-MGP10 H0 ADS	JD5	
W7	90x35-MGP10 H0 ADS	JD5	
W8	90x35-MGP10 H0 ADS	JD5	
W9	90x35-MGP10 H0 ADS	JD5	
W10	90x35-MGP10 H0 ADS	JD5	

- 5 more members were not shown -

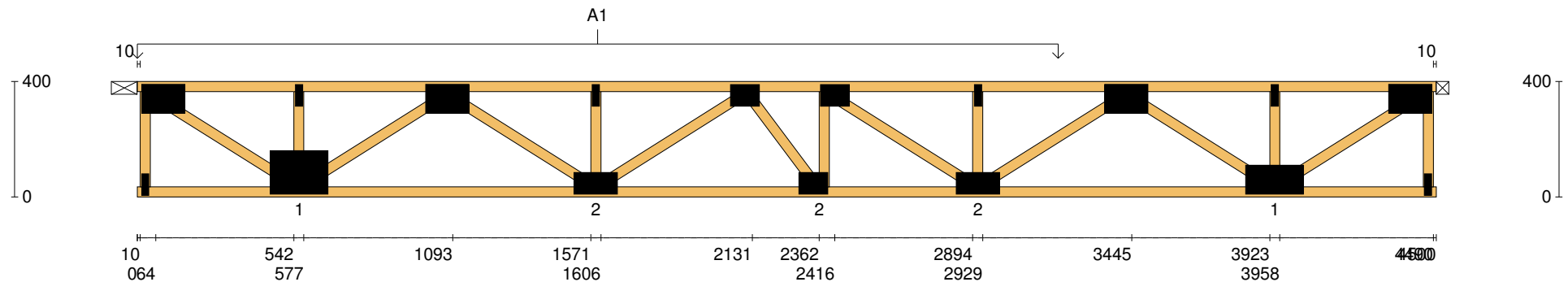
Vertical Reactions at Supports


	S1	S2
1.35DL (kN)	1.22	1.00
1.2DL + 1.5LL (kN)	4.08	3.89

Joint	Nail Plate	Joint	Nail Plate
T1	100x150-MN	B5	100x200-MN
BL1	25x75-MN	T9	25x75-MN
B1	150x200-MN	BR1	25x75-MN
T2	25x75-MN	T10	100x150-MN
T3	100x150-MN		
B2	75x150-MN		
T4	25x75-MN		
T5	75x100-MN		
B3	75x100-MN		
T6	75x100-MN		
B4	75x150-MN		
T7	25x75-MN		
T8	100x150-MN		

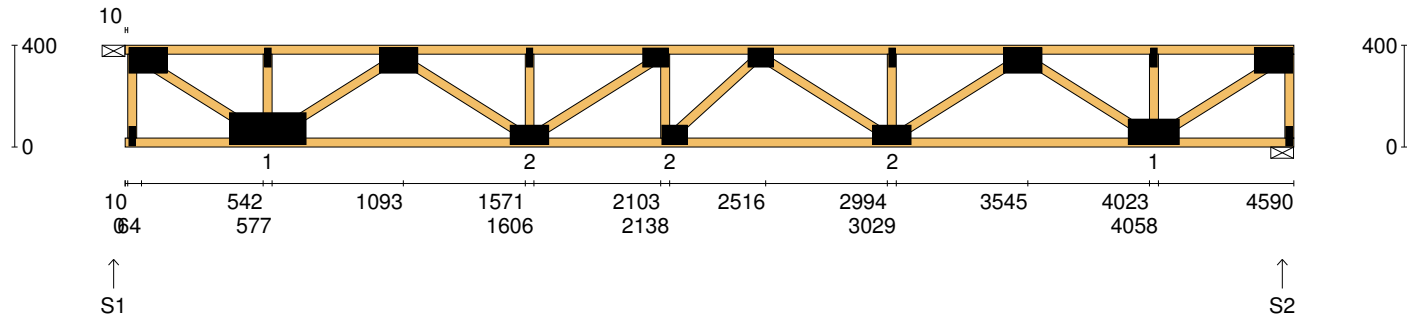
Span: 4500	Floor Material: Particle (15.4 kg/m²)	Application: General Areas	All dimensions in millimetres. This drawing should be read in conjunction with Multinail Technical sheets. Wall plates must be placed at supports only.	016020 (TN-016-020)
Overhang: 0/0	Floor Covering: Std Carpet + Underlay (8 kg/m²)	Live Load: 1.5 kPa		Ver: Floor 1.9.4
Spacing: 600	Ceiling Material: Plaster 10mm Supa Span (8.2 kg/m²)	Point Load: 1.8 kN		Date: 7/12/2018
Quantity: 1	Ceiling Fixing: Metal direct @ 600c	Design: AS 1720.1-2010		Page: 27 of 30

Client: D'ANDREA	Trusstech SA Pty Ltd 16 High St., Dry Creek, SA 5094	Job No: TT02360
Site: 50-52 WINDSOR ST MAGILL SA 5072 AUS		Weight: 28.46 kg
Ref: DWLG 1	Joist Name: FJ20 Type: SJ 400 Joists: FJ37	Total Weight: 28.46 kg
		Laminations: 1



User Def. Load		A1 53.00 kg/m ² WET AREA	
Applied Load			
DL	(kN)		
LL	(kN)		
WL Up	(kN)		
WL Dn	(kN)		
Span:	4500	Floor Material:	Particle (15.4 kg/m ²)
Overhang:	0/0	Floor Covering:	Std Carpet + Underlay (8 kg/m ²)
Spacing:	600	Ceiling Material:	Plaster 10mm Supa Span (8.2 kg/m ²)
Quantity:	1	Ceiling Fixing:	Metal direct @ 600c
		Application:	General Areas
		Live Load:	1.5 kPa
		Point Load:	1.8 kN
		Design:	AS 1720.1-2010
All dimensions in millimetres. This drawing should be read in conjunction with Multinail Technical sheets. Wall plates must be placed at supports only.			
			
		016020 (TN-016-020)	
		Ver: Floor 1.9.4	
		Date: 7/12/2018	
		Page: 28 of 30	

Client: D'ANDREA	Trusstech SA Pty Ltd 16 High St., Dry Creek, SA 5094 Joist Name: FJ21 Type: SJ 400 Joists: FJ38	Job No: TT02360
Site: 50-52 WINDSOR ST MAGILL SA 5072 AUS		Weight: 28.99 kg
Ref: DWLG 1		Total Weight: 28.99 kg Laminations: 1



TIMBER / PLATES


Member	Size	Plating	Restraint
BC1	90x35-MGP10 H0 ADS	JD5	600
TC1	90x35-MGP10 H0 ADS	JD5	300
LEW1	90x35-MGP10 H0 ADS	JD5	
W1	90x35-MGP10 H0 ADS	JD5	
W2	90x35-MGP10 H0 ADS	JD5	
W3	90x35-MGP10 H0 ADS	JD5	
W4	90x35-MGP10 H0 ADS	JD5	
W5	90x35-MGP10 H0 ADS	JD5	
W6	90x35-MGP10 H0 ADS	JD5	
W7	90x35-MGP10 H0 ADS	JD5	
W8	90x35-MGP10 H0 ADS	JD5	
W9	90x35-MGP10 H0 ADS	JD5	
W10	90x35-MGP10 H0 ADS	JD5	

- 5 more members were not shown -

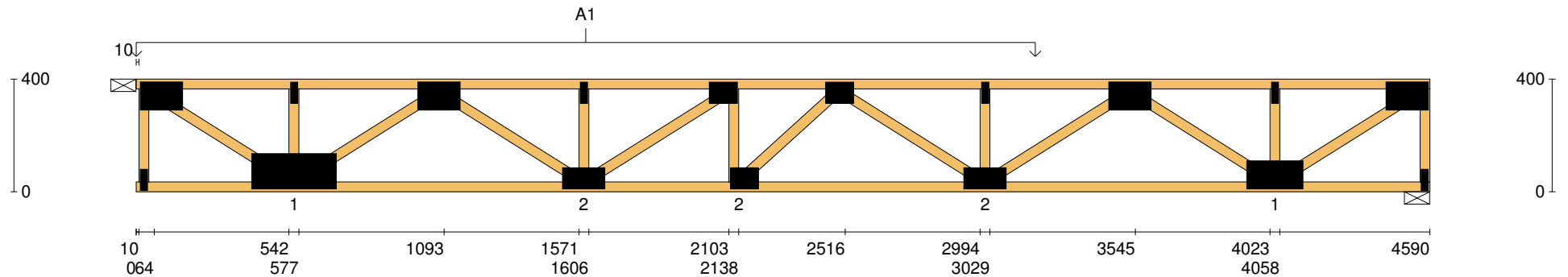
Vertical Reactions at Supports

	S1	S2
1.35DL (kN)	1.24	1.01
1.2DL + 1.5LL (kN)	4.17	3.97

Joint	Nail Plate	Joint	Nail Plate
T1	100x150-MN	B5	100x200-MN
BL1	25x75-MN	T9	25x75-MN
B1	125x300-MN	BR1	25x75-MN
T2	25x75-MN	T10	100x150-MN
T3	100x150-MN		
B2	75x150-MN		
T4	25x75-MN		
T5	75x100-MN		
B3	75x100-MN		
T6	75x100-MN		
B4	75x150-MN		
T7	25x75-MN		
T8	100x150-MN		


Span: 4590	Floor Material: Particle (15.4 kg/m²)	Application: General Areas	All dimensions in millimetres. This drawing should be read in conjunction with Multinail Technical sheets. Wall plates must be placed at supports only.	016020 (TN-016-020)
Overhang: 0/0	Floor Covering: Std Carpet + Underlay (8 kg/m²)	Live Load: 1.5 kPa		Ver: Floor 1.9.4
Spacing: 600	Ceiling Material: Plaster 10mm Supa Span (8.2 kg/m²)	Point Load: 1.8 kN		Date: 7/12/2018
Quantity: 1	Ceiling Fixing: Metal direct @ 600c	Design: AS 1720.1-2010		Page: 29 of 30

Client: D'ANDREA	Trusstech SA Pty Ltd 16 High St., Dry Creek, SA 5094	Job No: TT02360
Site: 50-52 WINDSOR ST MAGILL SA 5072 AUS		Weight: 28.99 kg
Ref: DWLG 1	Joist Name: FJ21 Type: SJ 400 Joists: FJ38	Total Weight: 28.99 kg
		Laminations: 1



User Def. Load	A1 53.00 kg/m ² WET AREA
-----------------------	---

Applied Load	
DL (kN)	
LL (kN)	
WL Up (kN)	
WL Dn (kN)	

Span: 4590	Floor Material: Particle (15.4 kg/m²)	Application: General Areas	All dimensions in millimetres. This drawing should be read in conjunction with Multinail Technical sheets. Wall plates must be placed at supports only.	016020 (TN-016-020)
Overhang: 0/0	Floor Covering: Std Carpet + Underlay (8 kg/m²)	Live Load: 1.5 kPa		Ver: Floor 1.9.4
Spacing: 600	Ceiling Material: Plaster 10mm Supa Span (8.2 kg/m²)	Point Load: 1.8 kN		Date: 7/12/2018
Quantity: 1	Ceiling Fixing: Metal direct @ 600c	Design: AS 1720.1-2010		Page: 30 of 30